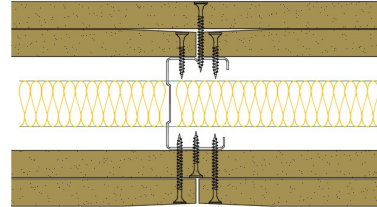


50-B-58(25) - SPEEDLINE System Data Sheet - Version V1 (24-10-23)

SPEEDLINE 50mm 'C' Stud Partition @600mm Ctrs,
with 2x BG Gyproc 15mm WallBoard each side,
25mm APR



System Performance Breakdown

Fire Resistance:

BS476 Part 22:1987:

Test Ref & Date or Applied Ref & Report:

Max Height:

Thickness:

Duty Grade: BS 5234: Part 2:1992:

Sound Insulation:

60/60 Minutes (Integrity/Insulation).

BTC 13282F - BRE Report P102396-1011A

Refer to Speedline Specification Clause

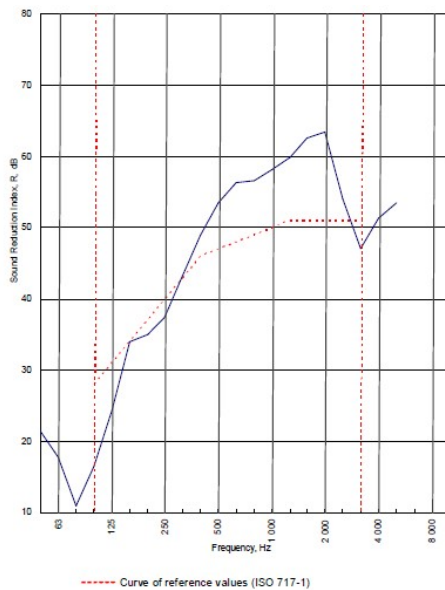
112 mm. (At Base Track, Excluding Finishes)

Severe - Annexes A-F

47 $R_{w,dB}$, Date Tested or Assessed Against - 50-B-57(25)

Test Code:
H17473AA
Test Date:
11/07/2011

Freq. Hz	R dB
50	21.5
63	17.7
80	10.9
100	16.4
125	24.3
160	33.9
200	34.9
250	37.4
315	43.2
400	48.9
500	53.4
630	56.3
800	56.6
1 000	58.1
1 250	59.8
1 600	62.5
2 000	63.4
2 500	54.0
3 150	47.0
4 000	51.3
5 000	53.5
6 300	
8 000	
10 000	



Rating according to BS EN ISO 717-1:1997 **R_w (C;Ctr) = 47 (-4;-12) dB**
Max dev. 11.6 dB at 100 Hz

C_{50-250} = -7 dB	C_{50-500} = -6 dB	$C_{100-600}$ = -3 dB
C_{50-315} = -17 dB	C_{50-400} = -17 dB	C_{50-600} = -12 dB

TESTED AT ONE OF THE UKAS ACCREDITED LABORATORIES BELOW

B.T.C (H-Ref on Graph)	
B.R.E	
AIRO	
S.R.L	

Customer: Metsec plc Hepsec Division

BTC 17473A: Page 9 of 11

